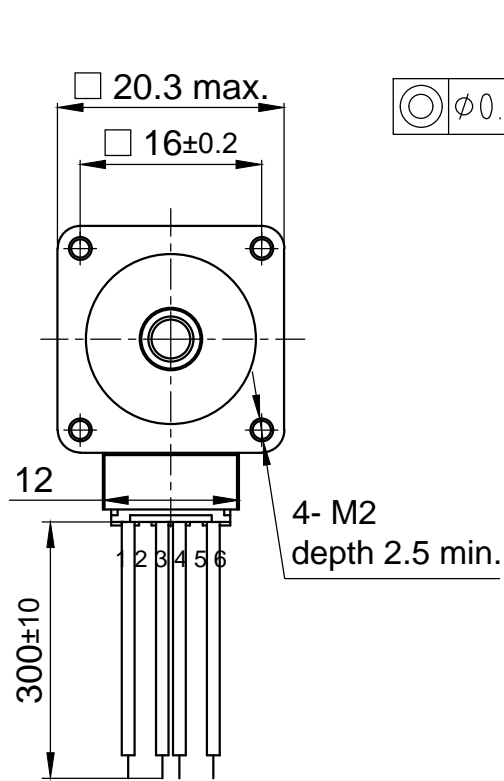
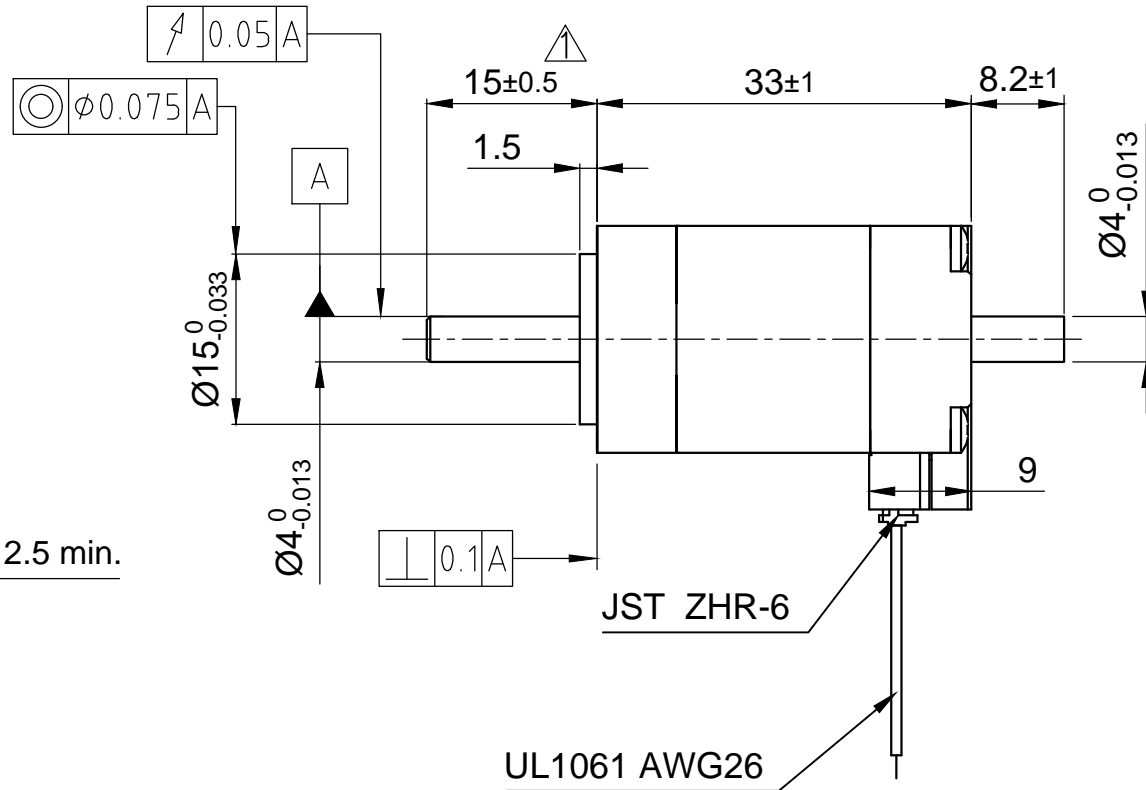


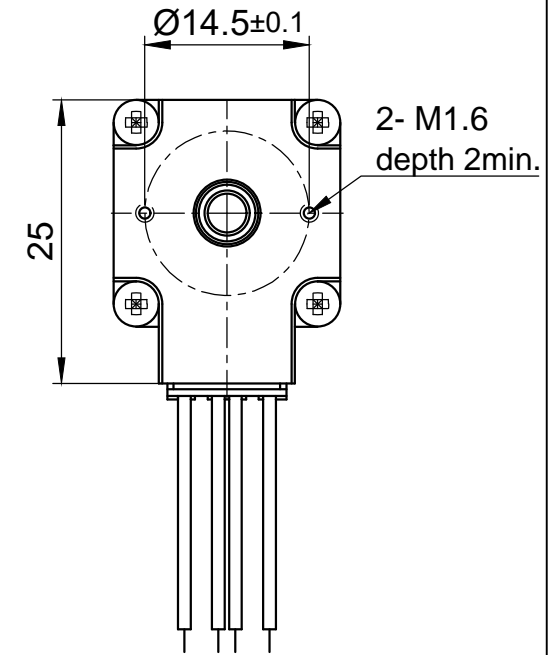
Front view and mounting



Side view



Rear view



MOTOR SPECIFICATION		
Voltage	V DC	3.9
Current per Winding	A	0.6
Resistance per Phase (25°C)	±15% Ω	6.5
Inductance per Phase (1 kHz)	±20% mH	2.6
Holding Torque	Nm	0.022
Step Angle	±5% °	1.8
Rotor Inertia	kg m ²	0.2 x 10 ⁻⁶

GENERAL MOTOR SPECIFICATION			
Ambient Temperature	°C	Min. -10	Max. 50
Max. Temperature Rise (at standstill - 2 phases energized)	°C	80	
ATTN: MAKE SURE TEMPERATURE OF MOTOR CASE REMAINS BELOW 100°C			
Max. Ambient Humidity (non condensing)	%	85	
Insulation Class		B	
Insulation Resistance	MΩ	100	
Dielectric Strength (for 1 min - coil to case)	V AC	500	

TYPE OF CONNECTION			
Series	Wire Col.	Pin No.	Winding
A	BK	1	[Symbol]
A\	GN	3	
B	RD	6	[Symbol]
B\	BU	4	

A-Shaft		Preload Spring		B-Shaft	
Max. Axial Force	F _a	N		4	
Max. Radial Force	F _r (a ₁ = 5 mm)	N		10	
Axial Play	F _a = 4 N	mm		0.08	
Radial Play	F _r = 4 N	mm		0.02	

ISO 8015	ISO 1302	ISO 2768-1 cK	ISO 13715	Weight: 0.06 kg
			Date	Name
			24.01.2018	Schneid_A
			Checked	Seimel_G
			07.02.2018	Seimel_G
			Approved	Seimel_G
			02.03.2018	Seimel_G

01200059		SCA2018S0604-B	
		-	
State: Released		Rev: 01	
		A4-Q	
		P	

