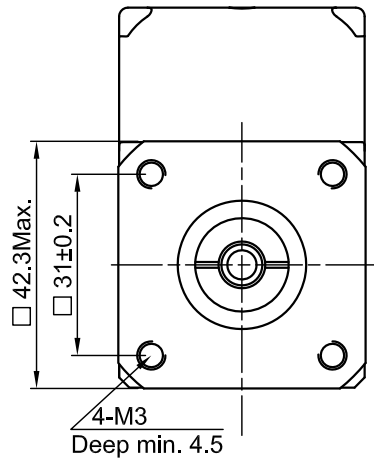
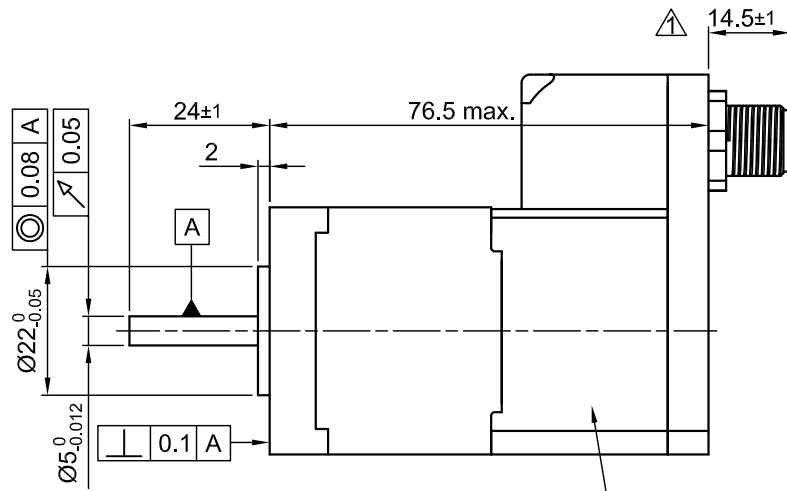


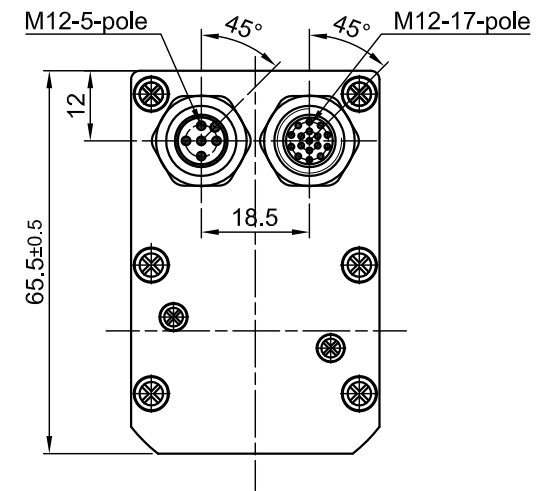
Front view and mounting



Side view



Rear view



Integrated controller and Encoder resolution: 1024 incr./rev.

CONNECTION		BIPOLAR		INPUT CONNECTION		PERMISSIBLE RADIAL+AXIAL FORCE		M12 CONNECTOR 17 POLE		M12 CONNECTOR 5 POLE																																																	
SPECIFICATION								<table border="1"> <thead> <tr> <th>Funktion</th> <th>Pin No.</th> </tr> </thead> <tbody> <tr><td>OUTPUT 1</td><td>1</td></tr> <tr><td>OUTPUT 2</td><td>8</td></tr> <tr><td>OUTPUT 3</td><td>3</td></tr> <tr><td>ANALOG INPUT</td><td>4</td></tr> <tr><td>GND</td><td>5</td></tr> <tr><td>GND</td><td>6</td></tr> <tr><td>RS485 Tx+</td><td>7</td></tr> <tr><td>RS485 Tx-</td><td>10</td></tr> <tr><td>RS485 Rx-</td><td>9</td></tr> <tr><td>RS485 Rx+</td><td>2</td></tr> <tr><td>INPUT 1</td><td>11</td></tr> <tr><td>INPUT 2</td><td>12</td></tr> <tr><td>INPUT 3</td><td>13</td></tr> <tr><td>INPUT 4</td><td>14</td></tr> <tr><td>INPUT 5</td><td>15</td></tr> <tr><td>INPUT 6</td><td>16</td></tr> <tr><td>NC</td><td>17</td></tr> </tbody> </table>		Funktion	Pin No.	OUTPUT 1	1	OUTPUT 2	8	OUTPUT 3	3	ANALOG INPUT	4	GND	5	GND	6	RS485 Tx+	7	RS485 Tx-	10	RS485 Rx-	9	RS485 Rx+	2	INPUT 1	11	INPUT 2	12	INPUT 3	13	INPUT 4	14	INPUT 5	15	INPUT 6	16	NC	17	<table border="1"> <thead> <tr> <th>Funktion</th> <th>Pin No.</th> </tr> </thead> <tbody> <tr><td>12-48 V</td><td>1</td></tr> <tr><td>12-48 V</td><td>2</td></tr> <tr><td>POWER GND</td><td>3</td></tr> <tr><td>POWER GND</td><td>4</td></tr> <tr><td>N.C.</td><td>5</td></tr> </tbody> </table>		Funktion	Pin No.	12-48 V	1	12-48 V	2	POWER GND	3	POWER GND	4	N.C.	5
Funktion	Pin No.																																																										
OUTPUT 1	1																																																										
OUTPUT 2	8																																																										
OUTPUT 3	3																																																										
ANALOG INPUT	4																																																										
GND	5																																																										
GND	6																																																										
RS485 Tx+	7																																																										
RS485 Tx-	10																																																										
RS485 Rx-	9																																																										
RS485 Rx+	2																																																										
INPUT 1	11																																																										
INPUT 2	12																																																										
INPUT 3	13																																																										
INPUT 4	14																																																										
INPUT 5	15																																																										
INPUT 6	16																																																										
NC	17																																																										
Funktion	Pin No.																																																										
12-48 V	1																																																										
12-48 V	2																																																										
POWER GND	3																																																										
POWER GND	4																																																										
N.C.	5																																																										
VOLTAGE (VDC)		12 TO 48		OUTPUT CONNECTION		AXIAL-FORCE Fa (N)		OUTPUT 1		STEP																																																	
AMPS/PHASE		* UP TO 2.7A (100%=1.8A)				Fa=7		OUTPUT 2		1																																																	
HOLDING TORQUE (Nm) [lb-in]		0.5 [4.425]				DISTANCE a (mm)		OUTPUT 3		2																																																	
DETENT TORQUE (Nm) [lb-in]		0.022 [0.195]				RADIAL-FORCE Fr (N)		ANALOG INPUT		3																																																	
STEP ANGLE (°) ± ACCURACY		* 1.8±5% TO MICROSTEP				SHAFT PLAY (mm)		GND		4																																																	
WEIGHT (Kg) [lb]		0.5 [1.1]				AT LOAD MAX: (N)		GND		5																																																	
* ADJUSTABLE WITH NANOPRO.						AXIAL		GND		6																																																	
OVERTEMPERATURE PROTECTION (ELECTRONICS): 75°C						RADIAL		RS485 Tx+		7																																																	
AMBIENT TEMPERATURE -10°~ 50°C [14°F ~ 122°F]						0.1		RS485 Tx-		10																																																	
INSULATION RESISTANCE 100 MOhm (UNDER NORMAL TEMPERATURE AND HUMIDITY)						0.02		RS485 Rx-		9																																																	
INSULATION CLASS B 130° [266°F]						30		RS485 Rx+		2																																																	
DIELECTRIC STRENGTH 500VAC FOR 1 MIN. (BETWEEN THE MOTOR COILS AND THE MOTOR CASE)						4.5		INPUT 1		11																																																	
AMBIENT HUMIDITY MAX. 85% (NO CONDENSATION)								INPUT 2		12																																																	
								INPUT 3		13																																																	
								INPUT 4		14																																																	
								INPUT 5		15																																																	
								INPUT 6		16																																																	
								NC		17																																																	

FULL STEP 2 PHASE-Ex., WHEN FACING MOUNTING END (X)

STEP	A	B	A\	B\	CCW	CW
1	+	+	-	-	↓	↑
2	-	+	+	-	↑	↓
3	-	-	+	+	↓	↑
4	+	-	-	+	↑	↓

				 Nanotec [®] PLUG & DRIVE		SCALE FREE	APVD	G.S.	05.09.12	STEPPING MOTOR DWG.NO PD2-N4118L1804-IP-2	
1	CHANGE HEIGHT OF M12	21.02.14	J.D.			X ±0.5	CHKD				
REV	DESCRIPTION	DATE	APVD	PD2-N4118L1804-IP-2	1PL ±0.2	DRN	J.W.	05.09.12			
					2PL ±0.1	SIGNATURE					
					ANGLE ±30'						