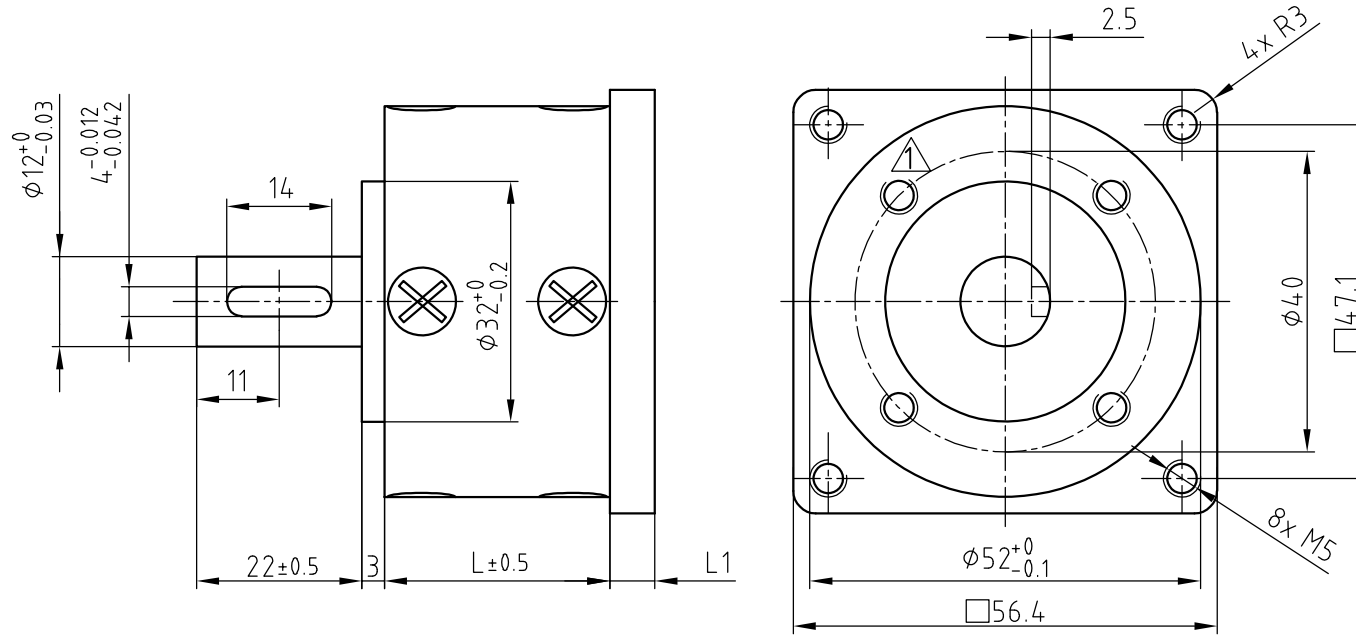


DIMENSION (UNIT : mm)

GEARBOX WITH CONNECTION FLANGE FOR NEMA23



Scale 1:1

FLANGE SPECIFICATIONS

MOTOR	L1 (mm)
ST59....	6.0



GEARBOXES SPECIFICATIONS

RATIO	RATED TORQUE (Nm) max.	MAX. TORQUE (Nm) max.	EFFICIENCY (%)	RADIAL SHAFT PLAY (mm)	AXIAL SHAFT PLAY (mm)	L ₃ (mm)	WEIGHT (kg)	SHAFT AXIAL LOAD (N)	RADIAL LOAD (10mm FROM FLANGE) (N)
1/4	1.0	3.0	80%	<=0.04	<=0.3	47.0	0.475	100	200
1/15	3.0	9.0	70%			62.5	0.660		
1/53	10.0	30.0	60%			78.0	0.850		
1/100	10.0	30.0	60%			78.0	0.850		

3	corrected length / torque	27.07.17	J.K.	<p>Nanotec PLUG & DRIVE</p>	SCALE FREE	APVD	G.S.	23.06.16	GPLL52+Zwischenflansch
2	remove flange for ST41/St42	23.06.16	A.S.		X ±0.5	CHKD	G.S.	23.06.16	
1	POSITION OF SCREW THREAD	01.12.11	J.W.		1PL ±0.2	DRN	J.W.	14.11.2008	
REV	DESCRIPTION	DATE	DRN		2PL ±0.1	SIGNATURE	DATE	DATE	GPLL52
					ANGLE ±30'				