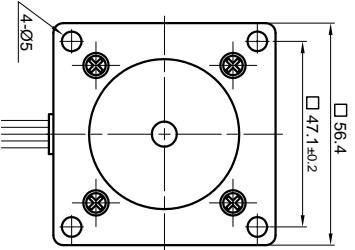
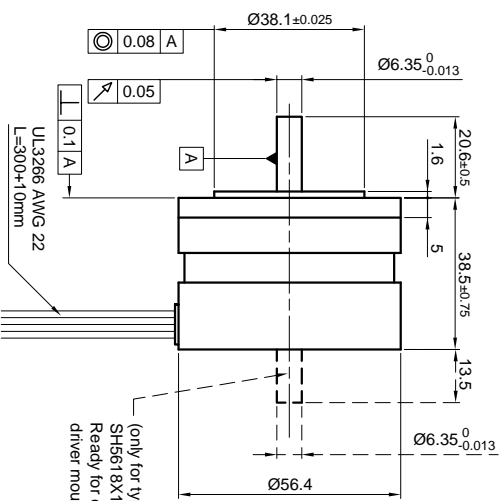


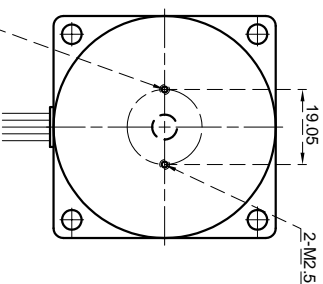
Front view and mounting



Side view



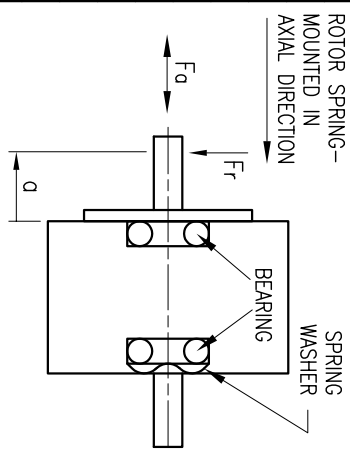
Rear view



SPECIFICATION	CONNECTION	
	UNIPOLAR OR BIPOLAR-1 WINDING	BIPOLAR
VOLTAGE (VDC)	4.0	5.15
AMPS/PHASE	1.4	0.99
RESISTANCE/PHASE (Ohms)@25°C	2.6±15%	5.2±15%
INDUCTANCE/PHASE (mH) @1KHz	2.8±20%	11.2±20%
HOLDING TORQUE (Nm) [lb-in]	0.285 [2.522]	0.403 [3.567]
DETENT TORQUE (Nm) [lb-in]	0.0086 [0.0756]	
STEP ANGLE (°)		1.8
STEP ACCURACY (NON-ACCUM)		±5%
ROTOR INERTIA (kg-m ²) [lb-in ²]		6.0×10 ⁻⁶ [0.02]
WEIGHT (kg) [lb]		0.38 [0.838]

PERMISSIBLE RADIAL+AXIAL FORCE

ROTOR SPRING-MOUNTED IN AXIAL DIRECTION



SPECIFICATION	CONNECTION	
	UNIPOLAR OR BIPOLAR-1 WINDING	BIPOLAR
VOLTAGE (VDC)	4.0	5.15
AMPS/PHASE	1.4	0.99
RESISTANCE/PHASE (Ohms)@25°C	2.6±15%	5.2±15%
INDUCTANCE/PHASE (mH) @1KHz	2.8±20%	11.2±20%
HOLDING TORQUE (Nm) [lb-in]	0.285 [2.522]	0.403 [3.567]
DETENT TORQUE (Nm) [lb-in]	0.0086 [0.0756]	
STEP ANGLE (°)		1.8
STEP ACCURACY (NON-ACCUM)		±5%
ROTOR INERTIA (kg-m ²) [lb-in ²]		6.0×10 ⁻⁶ [0.02]
WEIGHT (kg) [lb]		0.38 [0.838]
TEMPERATURE RISE: MAX.80°C (MOTOR STANDSTILL; FOR 2 PHASE ENERGIZED)		
AMBIENT TEMPERATURE -10°~ 50°C [14°F ~ 122°F]		
INSULATION RESISTANCE 100 Mohm (UNDER NORMAL TEMPERATURE AND HUMIDITY)		
INSULATION CLASS B 130° [266°F]		
DIELECTRIC STRENGTH 500VAC FOR 1 MIN. (BETWEEN THE MOTOR COILS AND THE MOTOR CASE)		
AMBIENT HUMIDITY MAX. 85% (NO CONDENSATION)		

SPECIFICATION	CONNECTION	
	UNIPOLAR OR BIPOLAR-1 WINDING	BIPOLAR
VOLTAGE (VDC)	4.0	5.15
AMPS/PHASE	1.4	0.99
RESISTANCE/PHASE (Ohms)@25°C	2.6±15%	5.2±15%
INDUCTANCE/PHASE (mH) @1KHz	2.8±20%	11.2±20%
HOLDING TORQUE (Nm) [lb-in]	0.285 [2.522]	0.403 [3.567]
DETENT TORQUE (Nm) [lb-in]	0.0086 [0.0756]	
STEP ANGLE (°)		1.8
STEP ACCURACY (NON-ACCUM)		±5%
ROTOR INERTIA (kg-m ²) [lb-in ²]		6.0×10 ⁻⁶ [0.02]
WEIGHT (kg) [lb]		0.38 [0.838]
TEMPERATURE RISE: MAX.80°C (MOTOR STANDSTILL; FOR 2 PHASE ENERGIZED)		
AMBIENT TEMPERATURE -10°~ 50°C [14°F ~ 122°F]		
INSULATION RESISTANCE 100 Mohm (UNDER NORMAL TEMPERATURE AND HUMIDITY)		
INSULATION CLASS B 130° [266°F]		
DIELECTRIC STRENGTH 500VAC FOR 1 MIN. (BETWEEN THE MOTOR COILS AND THE MOTOR CASE)		
AMBIENT HUMIDITY MAX. 85% (NO CONDENSATION)		

TYPE OF CONNECTION (EXTERN)	MOTOR			
	UNIPOLAR	1WINDING	BIPOLAR SERIAL	PARALLEL
	A	A	A	A
	COM	COM	A\	A\
	B	B	B	B
	COM	COM	B\	B\
	B\	B\	B	B
	B\	B\	B\	B\
			RED	RED
			RED/WHT	RED/WHT
			BLK/WHT	BLK/WHT
			BLK	BLK
			GRN	GRN
			GRN/WHT	GRN/WHT
			YEL/WHT	YEL/WHT
			YEL	YEL

FULL STEP 2 PHASE-Ex., WHEN FACING MOUNTING END (X)

STEP	A	B	A\	B\	CCW
1	+	+	-	-	
2	-	+	+	-	
3	-	-	+	+	
4	+	-	-	+	

WIRING DIAGRAM

(A) RED

RED/WHT
BLK/WHT

(A) BLK

(B) GRN

GRN/WHT
YEL/WHT

(B) YEL

REV	DESCRIPTION	DATE	APVD	NANOTEC:	SH5618X1408	SCALE FREE	APVD	S.K.	13.07.06	DWG.NO	SH5618X1408
						±0.5					
						±0.2					
						±0.1					
						±30°					