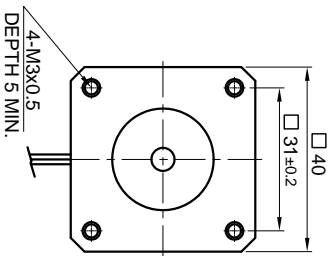
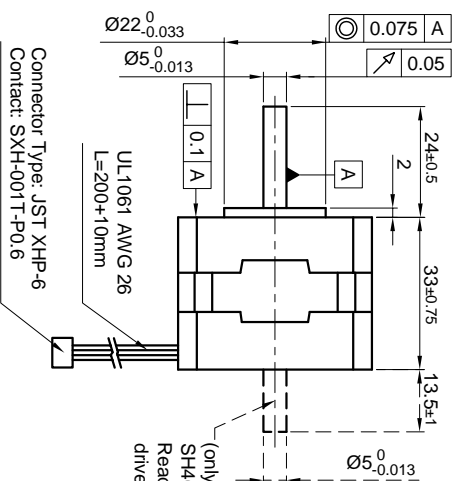


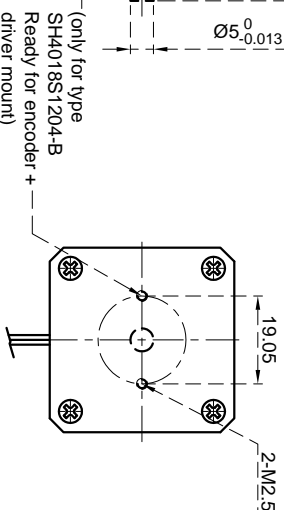
Front view and mounting



Side view

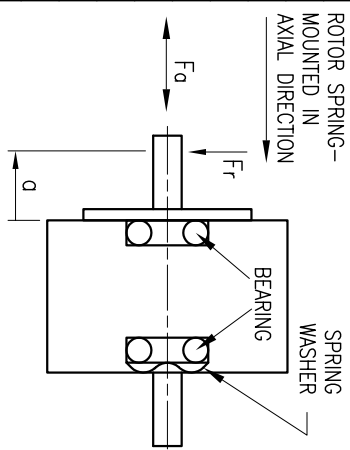


Rear view



CONNECTION	BIPOLAR
VOLTAGE (VDC)	3.36
AMPS/PHASE	1.2
RESISTANCE/PHASE (Ohms)@25°C	2.8±15%
INDUCTANCE/PHASE (mH) @1KHz	4.4±20%
HOLDING TORQUE (Nm) [lb-in]	0.15 [1.328]
DETTENT TORQUE (Nm) [lb-in]	4.5×10 ⁻³ [0.0398]
STEP ANGLE (°)	1.8
STEP ACCURACY (NON-ACCUM)	±5%
ROTOR INERTIA (Kg-m ²) [lb-in ²]	1.9×10 ⁻⁶ [6.49×10 ⁻³]
WEIGHT (Kg) [lb]	0.2 [0.441]
TEMPERATURE RISE: MAX.80°C (MOTOR STANDSTILL; FOR 2 PHASE ENERGIZED)	
AMBIENT TEMPERATURE -10°~ 50°C [14°F ~ 122°F]	
INSULATION RESISTANCE 100 Mohm (UNDER NORMAL TEMPERATURE AND HUMIDITY)	
INSULATION CLASS B 130° [266°F]	
DIELECTRIC STRENGTH 500VAC FOR 1 MIN. (BETWEEN THE MOTOR COILS AND THE MOTOR CASE)	
AMBIENT HUMIDITY MAX. 85% (NO CONDENSATION)	

PERMISSIBLE RADIAL+AXIAL FORCE

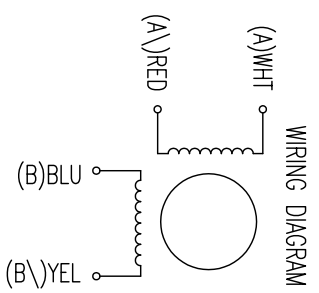


AXIAL-FORCE Fa (N)	Fr=7
DISTANCE a (mm)	5 10 15 20
RADIAL-FORCE Fr (N)	58 36 26 20
AXIAL	0.075
SHAFT PLAY (mm)	0.025
AT LOAD MAX: (N)	10 5.0

TYPE OF CONNECTION (EXTERN)	MOTOR
BIPOLAR	CONNECTOR PIN NO. LEADS WINDING
A —	1 WHT A
A \ —	3 RED A \
B —	2 BLU B
B \ —	4 YEL B \

FULL STEP 2 PHASE-EX., WHEN FACING MOUNTING END (X)

STEP	A	B	A \	B \	CCW
1	+	+	-	-	←
2	-	+	+	-	←
3	-	-	+	+	→
4	+	-	-	+	→



REV	DESCRIPTION	DATE	APVD	NANOTEC:	SCALE FREE	APVD	CHKD	DRN	SIGNATURE	DATE	DWG.NO
				SH4018S1204	±0.5 ±0.2 ±0.1 ±30°	S.K.		J.W.		04.07.06	SH4018S1204
						STEPPING MOTOR					