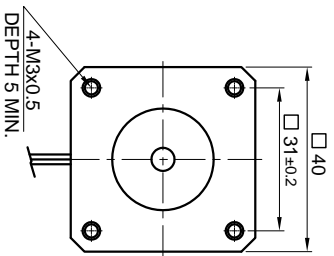
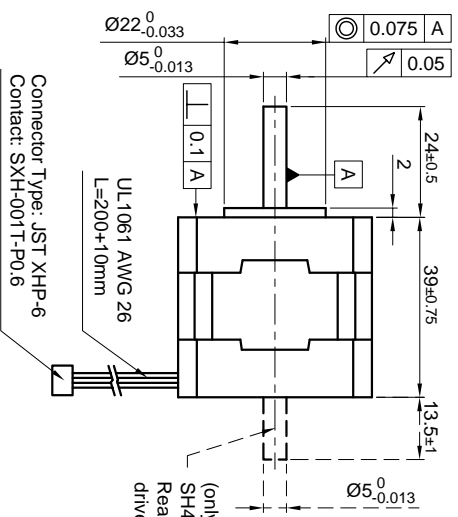


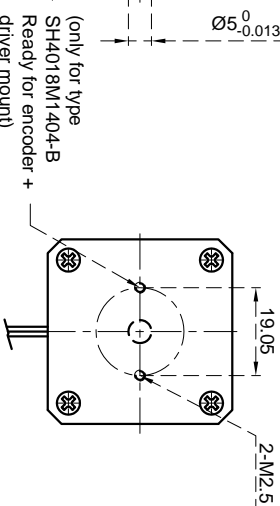
Front view and mounting



Side view

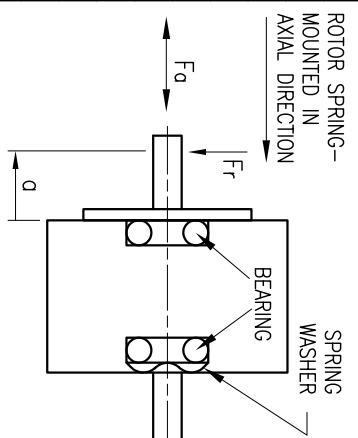


Rear view



CONNECTION	BIPOLAR
VOLTAGE (VDC)	3.36
AMPS/PHASE	1.4
RESISTANCE/PHASE (Ohms)@25°C	2.4±15%
INDUCTANCE/PHASE (mH) @1KHz	5.0±20%
HOLDING TORQUE (Nm) [lb-in]	0.18 [1.593]
DETENT TORQUE (Nm) [lb-in]	5.4×10 ⁻³ [0.0478]
STEP ANGLE (°)	1.8
STEP ACCURACY (NON-ACCUM)	±5%
ROTOR INERTIA (Kg-m ²) [lb-in ²]	2.5×10 ⁻⁶ [8.54×10 ⁻³]
WEIGHT (Kg) [lb]	0.22 [0.485]
TEMPERATURE RISE: MAX.80°C (MOTOR STANDSTILL; FOR 2 PHASE ENERGIZED)	
AMBIENT TEMPERATURE -10°~ 50°C [14°F ~ 122°F]	
INSULATION RESISTANCE 100 Mohm (UNDER NORMAL TEMPERATURE AND HUMIDITY)	
INSULATION CLASS B 130° [266°F]	
DIELECTRIC STRENGTH 500VAC FOR 1 MIN. (BETWEEN THE MOTOR COILS AND THE MOTOR CASE)	
AMBIENT HUMIDITY MAX. 85% (NO CONDENSATION)	

PERMISSIBLE RADIAL+AXIAL FORCE

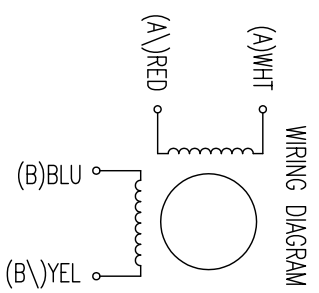


TYPE OF CONNECTION (EXTERN)	MOTOR LEADS	WINDING
BIPOLAR	A —	A
	A \ —	A \
	B —	B
	B \ —	B \
	CONNECTOR PIN NO.	
	1	WHT
	3	RED
	2	BLU
	4	YEL

AXIAL-FORCE Fa (N)	FR	FA
5	10	15
58	36	26
5	10	15
58	36	26
AXIAL	AXIAL	RADIAL
SHAFT PLAY (mm)	0.075	0.025
AT LOAD MAX: (N)	10	5.0

FULL STEP 2 PHASE-Ex, WHEN FACING MOUNTING END (X)

STEP	A	B	A \	B \	CCW	CW
1	+	+	-	-	↑	↓
2	-	-	+	+	↓	↑
3	-	-	+	+	↑	↓
4	+	+	-	-	↓	↑



REV	DESCRIPTION	DATE	APVD	SH4018M1404	SCALE FREE	APVD	S.K.	04.07.06	DWG:NO	SH4018M1404
					±0.5	CHKD				
					±0.2	DRN	J.W.	04.07.06		
					±0.1	SIGNATURE				
					±30°	DATE				

STEPPING MOTOR

NANOTEC: