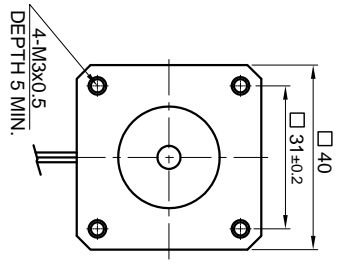
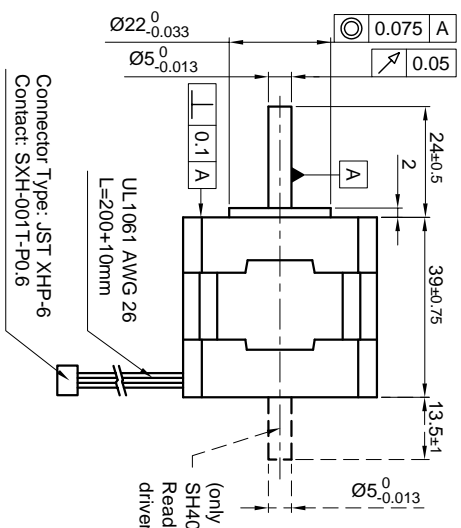


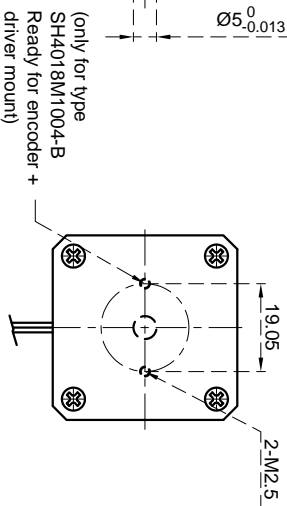
Front view and mounting



Side view

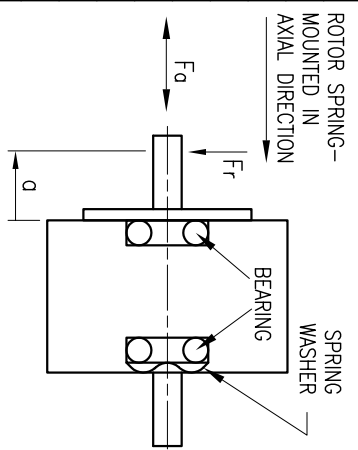


Rear view



CONNECTION	BIPOLAR
VOLTAGE (VDC)	3.5
AMPS/PHASE	1.0
RESISTANCE/PHASE (Ohms)@25°C	3.5±15%
INDUCTANCE/PHASE (mH) @1KHz	5.1±20%
HOLDING TORQUE (Nm) [lb-in]	0.18 [1.593]
DETENT TORQUE (Nm) [lb-in]	5.4×10 ⁻³ [0.0478]
STEP ANGLE (°)	1.8
STEP ACCURACY (NON-ACCUM)	±5%
ROTOR INERTIA (Kg-m ²) [lb-in ²]	2.5×10 ⁻⁶ [8.54×10 ⁻³]
WEIGHT (Kg) [lb]	0.22 [0.485]
TEMPERATURE RISE: MAX.80°C (MOTOR STANDSTILL; FOR 2 PHASE ENERGIZED)	
AMBIENT TEMPERATURE -10°~ 50°C [14°F ~ 122°F]	
INSULATION RESISTANCE 100 Mohm (UNDER NORMAL TEMPERATURE AND HUMIDITY)	
INSULATION CLASS B 130° [266°F]	
DIELECTRIC STRENGTH 500VAC FOR 1 MIN. (BETWEEN THE MOTOR COILS AND THE MOTOR CASE)	
AMBIENT HUMIDITY MAX. 85% (NO CONDENSATION)	

PERMISSIBLE RADIAL+AXIAL FORCE

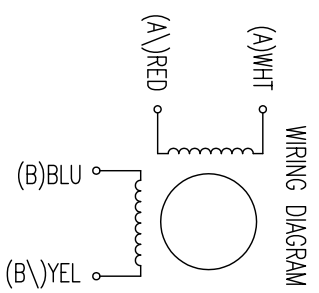


AXIAL-FORCE Fa (N)	FR	FR	FR	FR
5	10	15	20	20
58	36	26	20	20
0.075	AXIAL	RADIAL		
10	0.075	0.025		
	5.0			

TYPE OF CONNECTION (EXTERN)	MOTOR	CONNECTOR PIN NO.	LEADS	WINDING
BIPOLAR	A ---	1	WHT	A
	A \---	3	RED	A \
	B ---	2	BLU	B
	B \---	4	YEL	B \

FULL STEP 2 PHASE-EX., WHEN FACING MOUNTING END (X)

STEP	A	B	A \	B \	CCW	CW
1	+	+	-	-	←	→
2	-	-	+	+	→	←
3	-	-	+	+	←	→
4	+	+	-	-	→	←



REV	DESCRIPTION	DATE	APVD

NANOTEC:
SH4018M1004

SCALE FREE	APVD	SIGNATURE	DATE
±0.5 ±0.2 ±0.1 ±30°	S.K.	J.W.	04.07.06

STEPPING MOTOR
DWG:NO SH4018M1004