



OPTIONS



VERSIONS

Type	Force N	Speed mm/s	Current per Winding A	Resolution $\mu\text{m}/\text{step}$	Resistance per Winding Ohm	Thread Diameter mm	Thread Lead mm	Stroke Length „X“ mm	Housing Length „B“ mm	Length „A“ mm	Weight kg
L3518S1204-T6X1-A	240	22	1.2	5	1.85	6	1	25 - 50	43 - 68	34	0.24 - 0.28
L3518S1204-T6X2-A	160	36	1.2	10	1.85	6	2	25 - 50	43 - 68	34	0.24 - 0.28
L3518S1204-T5X5-A	85	200	1.2	25	1.85	5	5	25 - 50	43 - 68	34	0.24 - 0.28

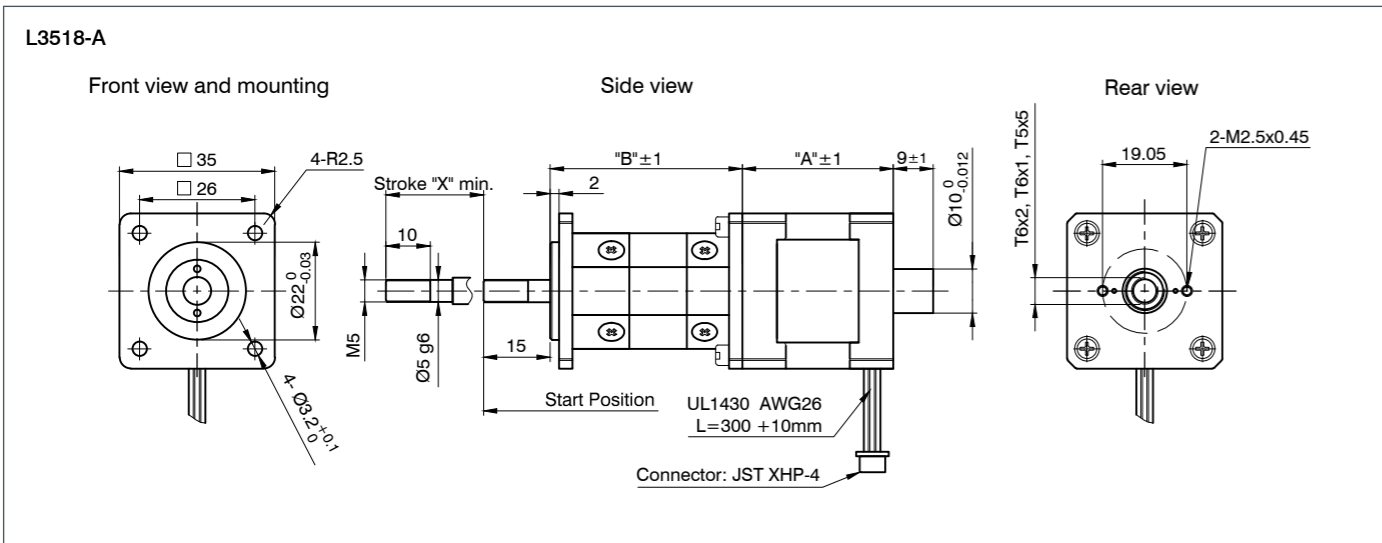
ORDER IDENTIFIER

L3518S1204-T5X5-
 A25 = 25 mm stroke length „X“
 A50 = 50 mm stroke length „X“

CAUTION

The force and output power ratings listed in the data sheets are based on a duty cycle of approx. 10% to 20% and must be reduced for higher values. Moving against fixed limit stops should be avoided.

DIMENSIONS (IN MM)



FORCE-VELOCITY CURVES

