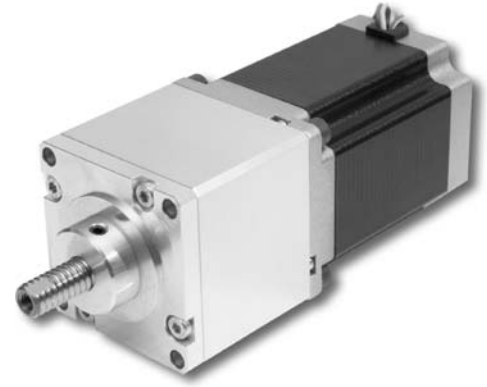


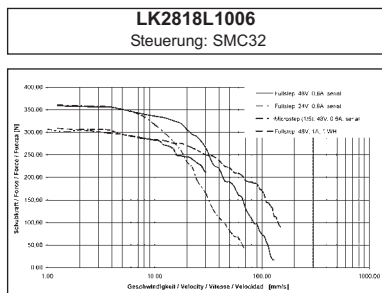
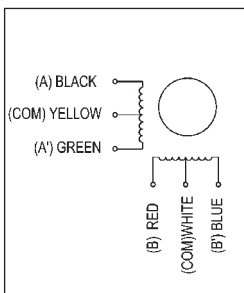
Linear-Aktuator with ball screw LK

Thanks to large dimensioned roller bearing the new linear actuators with integrated ball screws can produce high shearing forces of up to 20 KN with a very high precision and long operating time.

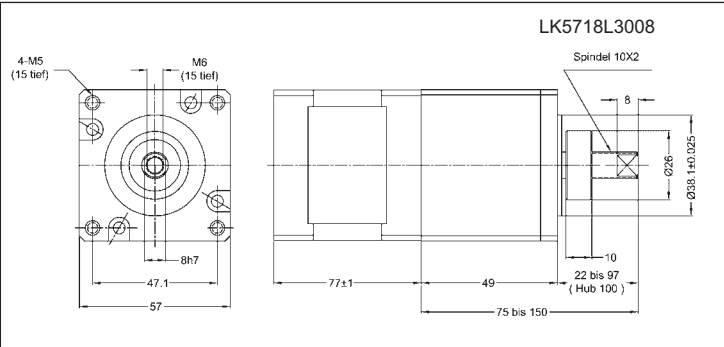
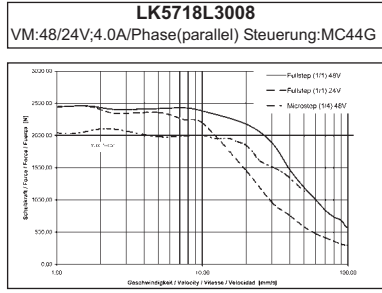
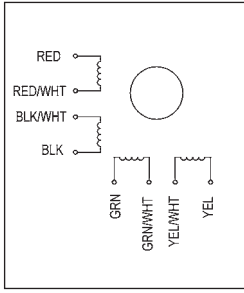
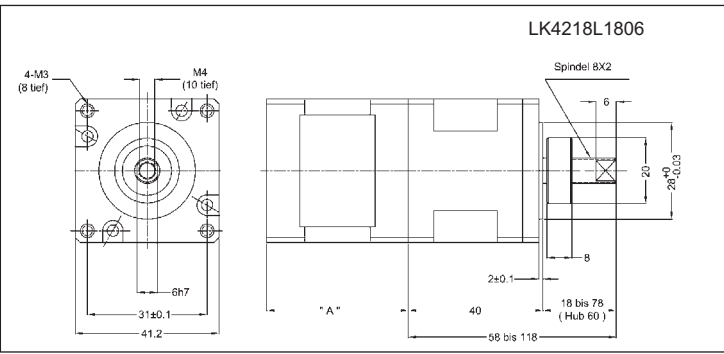
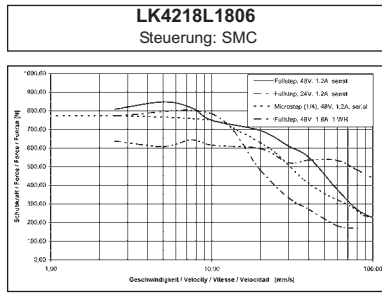
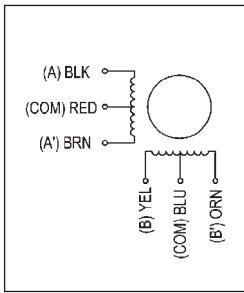
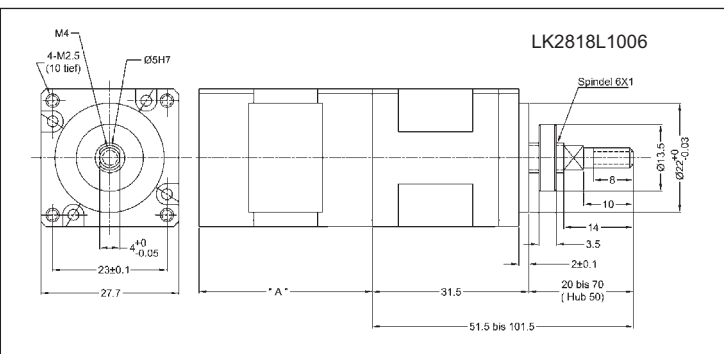
- easy assembly due to same flange dimensions as of standard motors (special flanges on request)
- rolled ball screw of precision class G7/G9
- standard axial clearance (maximum 0.15) compensable
- can be delivered in sizes 28, 42 and 57
- encoder and plug & drive versions possible
- On request: High-precision actuator with spindle precision up to G5 and axial clearance ≤ 0.01 and dirt scraper



Pin assignments



Dimensions



* with the Microstep-Driver <0,001mm

Torque curves for all types can be found on www.nanotec.com

Available sizes

Type	Flange mm	Shearing Force N	max.Feed mm/s	Resolution mm/Step	Positioning- accuracy mm(*)	Spindle- pitch mm	Storke** mm	Current A/Winding	Inductance mH/Winding	Resistance Ohm/Winding	Gewicht Kg	Length "A" mm
LK2818L1006	28	350	100	0.005	0.015	1	56	0.95	1.4	4.6	0.2	51
LK4218L1806	42	800	100	0.01	0.010	2	65	1.8	1.6	1.9	0.28	47
LK5718L3008	56	1800	50	0.01	0.010	2	110	3.0	2.2	1.0	1.0	76

**longer Spindle (Storke) others on demand