

**Economy planetary gear GPLL**



The GPLL series economy planetary gear is ideal for applications in which the increased torque of a motor with gearing is needed with the same construction volumes. The slightly higher circumferential backlash is not relevant for many applications such as transport drives or positioning in one rotation direction, many controllers also already offer automatic play compensation (such as SMCI..) and hence compensates the backlash electronically.

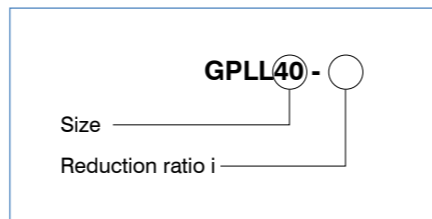
**Gears**

**Circumferential backlash: Axial/radial play:**

GPLL22	2.5°	< = 0.3 / < = 0.04 mm
GPLL40	3°	< = 0.3 / < = 0.04 mm
GPLL52	3°	< = 0.3 / < = 0.04 mm

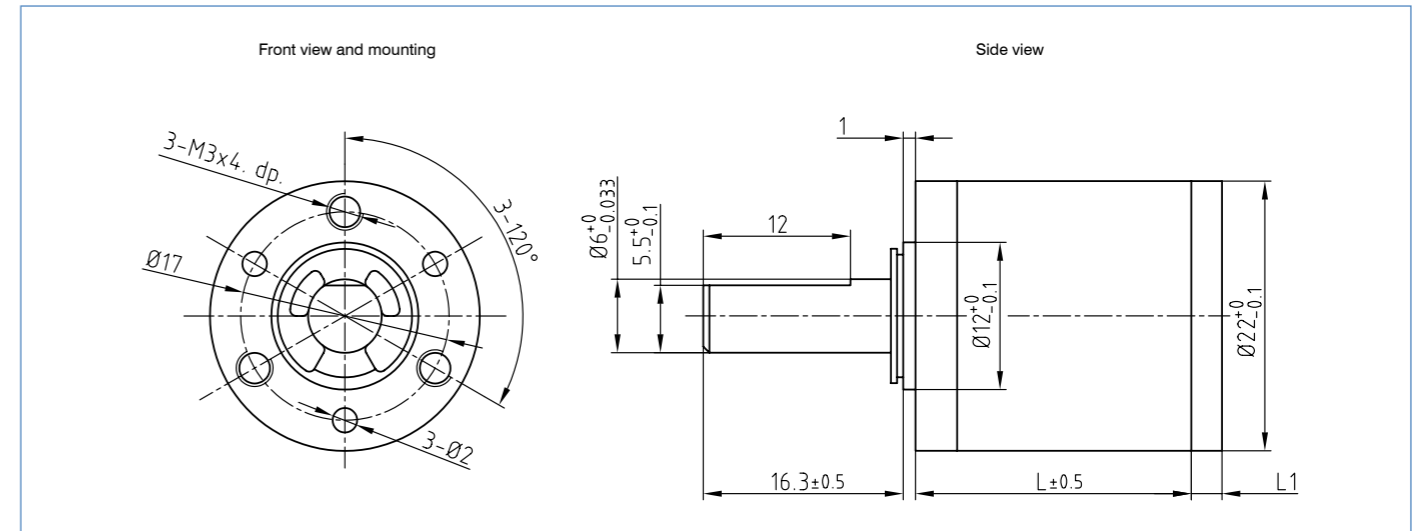
**Service life Lh10 > 1000 h**

**Order identifier**

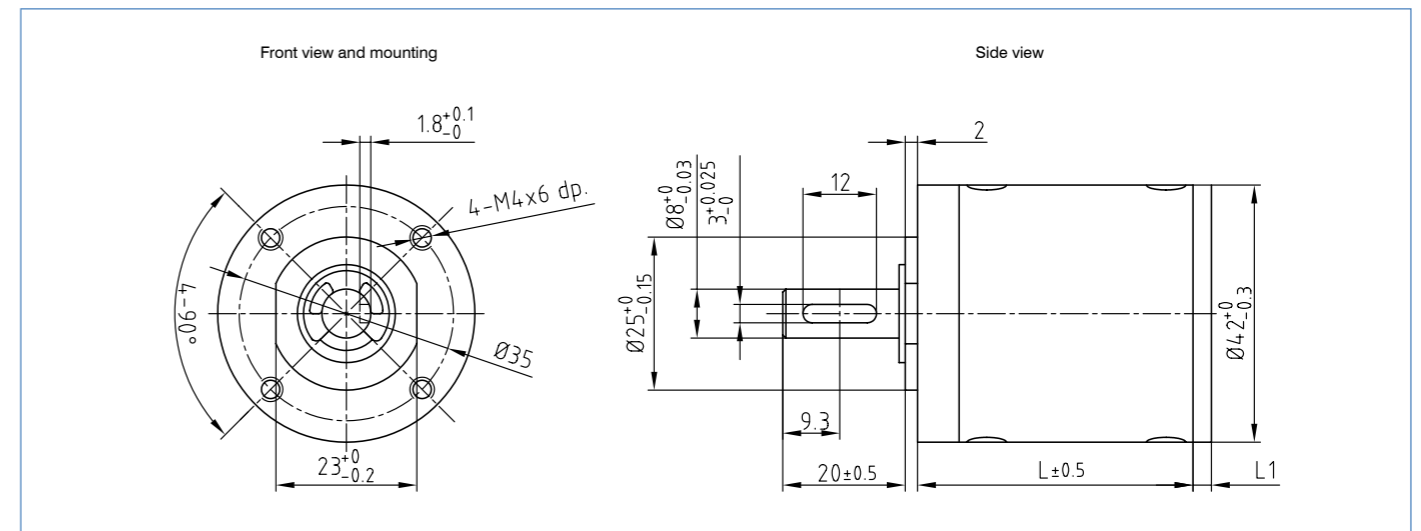


Available versions (others on request)									
Type	Reduction ratio	Nom. torque Ncm	max. torque Ncm	Efficiency	Weight kg	Length mm	Intermediate flange L1 mm	Combination option with motor	axial/radial force N
GPLL22-5	5:1 (42/9:1)	20	60	80%	0.046	23.3	without	DB28	7.2
GPLL22-25	25:1 (251/10:1)	30	90	70%	0.051	29.5		ST20, 28	
GPLL22-90	90:1 (891/211/66:1)	40	120	60%	0.058	35.7			
GPLL40-14	14:1 (14:1)	100	300	70%	0.191	39.2	6.0	ST40, 41, 42	30/80
GPLL40-24	24:1 (24:1)	100	300	70%	0.191	39.2		DB42	
GPLL40-49	49:1 (49:1)	180	540	60%	0.231	45.9			
GPLL52-4	4:1 (41/10:1)	150	450	80%	0.475	53.0	6.0	ST40, 41, 42	100/200
GPLL52-15	15:1 (151/10:1)	500	1500	70%	0.660	68.5		ST57, 58, 59, 60	
GPLL52-53	53:1 (531/12:1)	1000	3000	60%	0.850	84.0		DB57	
GPLL52-100	100:1 (1002/7:1)	1000	3000	60%	0.850	84.0	(on request)	DB87	

**GPLL22 Outline drawing (in mm)**



**GPLL40 Outline drawing (in mm)**



**GPLL52 Outline drawing (in mm)**

