

## Brushless DC motors - 250 W to 750 W

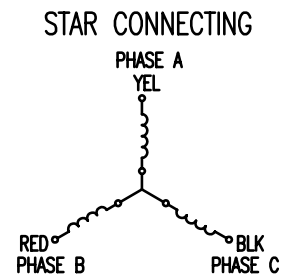


### Option



### Pin configuration DB87

DB87	Color	Function
Motor	Yellow	U
	Red	V
	Black	W
Hall	Red	+5 V
	Blue	H1
	White	H2
	Green	H3
	Black	GND



### Accessories

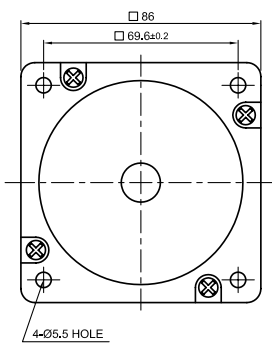
**Encoder:** WEDS...; WEDL...  
with 500-1000 pulses

**Brake:** Possible on request.

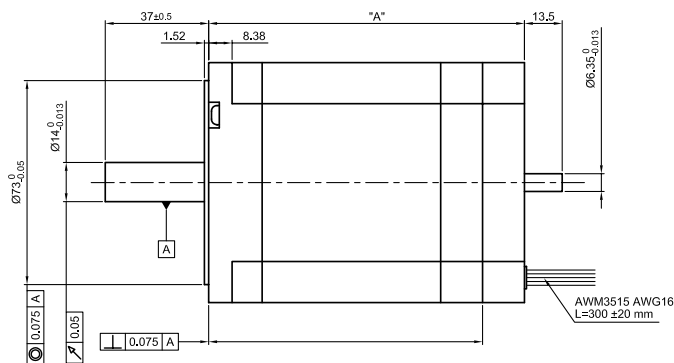
### Outline drawing (mm)

#### DB87 - sizes S, M, L

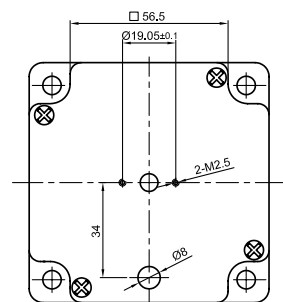
Front view and mounting



Side view



Rear view



### Available versions (others on request)

Type	Nom. output W	Nom./peak torque Ncm	Nom./peak current A	Nom. voltage/speed V/rpm	Torque Constant Ncm/A	Resistance Ohm/winding	Inductance mH/winding	Rotor inertia gcm <sup>2</sup>	Weight kg	Length "A" mm
DB87S01-S	220	70 / 201	6.25 / 17.95	48 / 3000	11.20	0.18	0.35	800	1.85	86
DB87M01-S	440	140 / 420	10.77 / 32.31	48 / 3000	13.00	0.07	0.53	1600	2.60	113
DB87L01-S	660	210 / 630	17.95 / 53.85	48 / 3000	11.70	0.07	0.10	2400	4.00	140