

Brushless DC motors

Brushless DC motors - 3.8 W to 16 W



Option



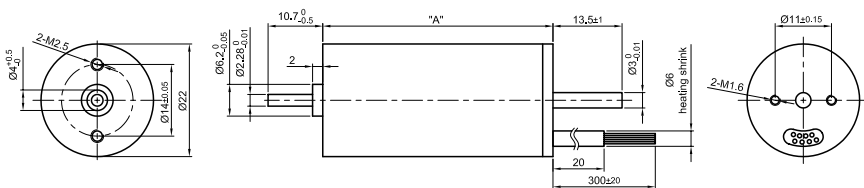
Outline drawing (mm)

DB22

Front view and mounting

Side view

Rear view



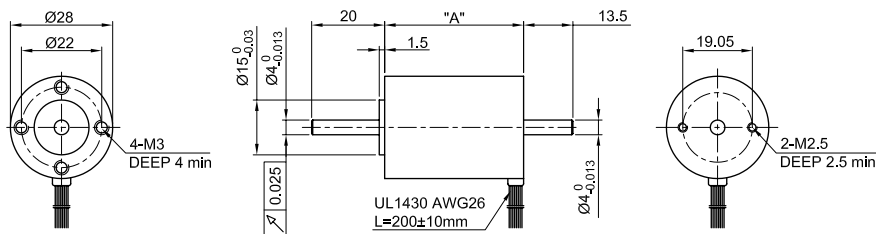
Outline drawing (mm)

DB28

Front view and mounting

Side view

Rear view



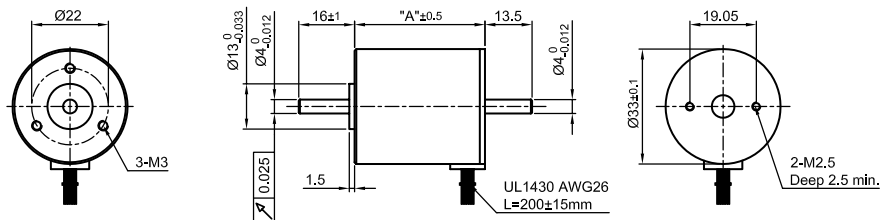
Outline drawing (mm)

DB33

Front view and mounting

Side view

Rear view



Pin configuration DB22

DB22	Color	Function
Motor	Red	U
	Brown	V
	Black	W
Hall	Blue	+5 V
	Green	GND
	Red	H1
	Yellow	H2
	Brown	H3

STAR CONNECTING
 PHASE A
 PHASE B
 PHASE C

Pin configuration DB28

DB28	Color	Function
Motor	Green	U
	Red	V
	Black	W
Hall	Yellow	+5 V
	White	GND
	Blue	H1
	Orange	H2
	Brown	H3

STAR CONNECTING
 PHASE A
 PHASE B
 PHASE C

Pin configuration DB33

DB33	Color	Function
Motor	Green	U
	Red	V
	Black	W
Hall	Yellow	+5 V
	Blue	H1
	Orange	H2
	Brown	H3
	White	GND

STAR CONNECTING
 PHASE U
 PHASE V
 PHASE W

Available versions (others on request)

Type	Nom. output W	Nom./peak torque Ncm	Nom./peak current A	Nom. voltage/speed V/rpm	Torque Constant Ncm/A	Resistance Ohm/winding	Inductance mH/winding	Rotor inertia gcm ²	Weight kg	Length "A" mm
DB22M01	3.8	0.8 / 2.1	0.265 / 1.1	24 / 4800	3.02	23.0	6.2	0.66	0.075	45
DB22L02	7.7	2.2 / 5.0	0.62 / 1.5	24 / 3500	3.55	11.80	4.2	1.32	0.120	68
DB28S01	6.0	0.7 / 2.1	0.51 / 2.5	15 / 8000	1.37	8.00	2.5	1.23	0.060	28
DB28M01	14.0	1.4 / 4.2	0.15 / 2.8	24 / 10000	1.60	4.63	1.6	2.12	0.082	38
DB28L01	16.0	5.0 / 15.0	1.0 / 3.0	24 / 3700	5.00	4.20	2.2	5.98	0.280	77
DB33S01	7.0	22.0 / 66.0	0.56 / 1.4	24 / 3000	4.60	12.40	7.0	2.94	0.115	38