

PD4-N5918/N6018 series stepper motor with integrated controller



Option



Pin configuration

JST PHD-8		
PIN	CABLE COLOR	ASSIGNMENT
1	Blue	GND
2	White/pink	+Vb external
3	Yellow	RS485 Rx-
4	Green	RS485 Rx+
5	Pink	RS485 Tx-
6	Gray	RS485 Tx+
7	Brown	CAN+
8	White	CAN-

JST PHD-12		
PIN	CABLE COLOR	ASSIGNMENT
1	Gray/brown	COM
2	Red	GND
3	Black	Input 1
4	Violet	Input 2
5	Gray/pink	Input 3
6	Red/blue	Input 4
7	White/green	Input 5
8	Brown/green	Input 6
9	White/blue	Analog input
10	White/yellow	Output 1
11	Yellow/brown	Output 2
12	White/gray	Output 3

PHÖNIX CONNECTOR
FK-MCP 1.5/2-ST-3.5

PIN	CABLE COLOR	ASSIGNMENT
1	1	GND
2	2	UB_IN

Accessories

- ZK-PD4N**
Connecting cable set
500 mm long with connector
- ZIB-PDx-N** Interface board for
rapid commissioning
- ZK-RS485-USB**
RS485-USB cable for PC connection

Order identifier

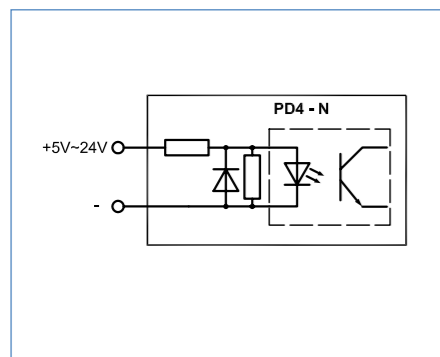
- PD4-N5918X4204
- PD4-N5918M4204
- PD4-N5918L4204
- PD4-N6018L4204

Technical data

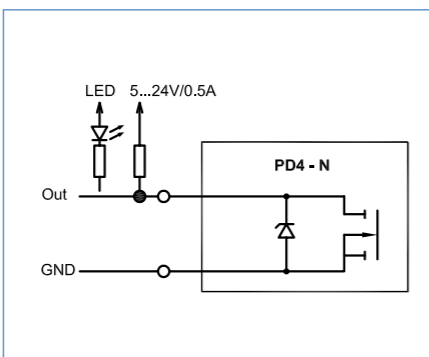
- Operating voltage:** 24 to 48 V DC
- Max. phase current:** Adjustable per software up to 4.8 A (1% steps), 100%=3.2 A
- Interface:** RS485 or CANopen
- Operating mode:** Position, speed, flag position, clock direction, analog, analog position, torque
- Operating mode:** 1/1, 1/2, 1/4, 1/5, 1/8, 1/10, 1/32, 1/64, adaptive (1/128)
- Step frequency:** 0 to 50 kHz in the clock/direction mode, 0 to 25 kHz in all other modes
- Inputs:** 6 optocoupler inputs (5 - 24 V)
- Outputs:** Open-Drain (0 switching, max. 24 V/0.5 A)
- Position monitoring:** Automatic error correction up to 0.9°
- Current reduction:** Adjustable in 1% values
- Protection circuit:** Overvoltage and heatsink temperature > 80 °C
- Temperature range:** -10 to + 40 °C
- Connection type :** Connector with JST plugs
- New functions:** Closed loop / sinusoidal commutation / dspDrive / easily programmable as sequential controller with Nano

! Attention: An intermediate circuit capacitor of at least 4,700 µF (Z-K4700/50) must be provided on the supply voltage.

Input circuits



Output circuits

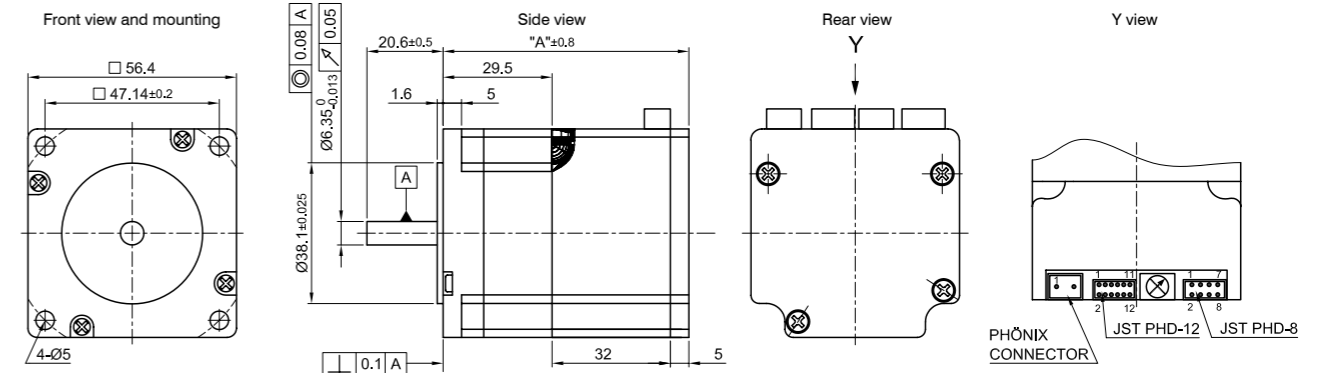


Available versions (others on request)

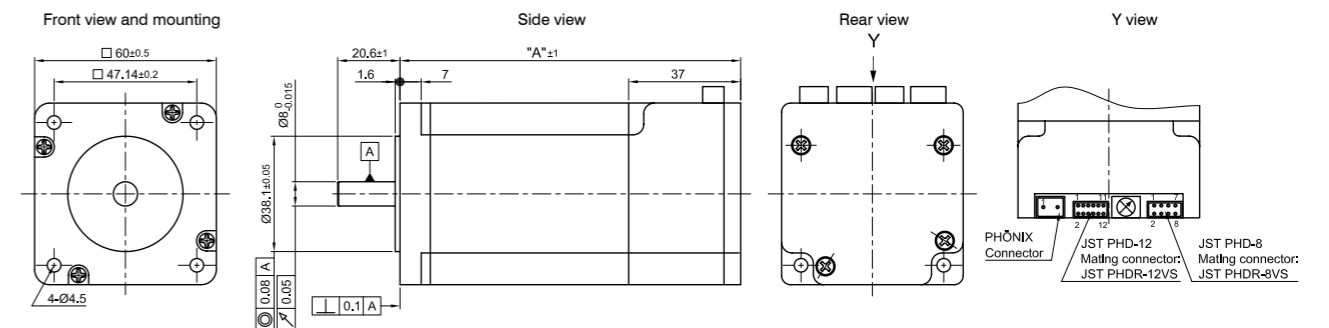
Type	Holding torque Ncm	Weight kg	"A" mm
PD4-N5918X4204	53.7	0.49	66.5
PD4-N5918M4204	113.0	0.80	80.6
PD4-N5918L4204	198.0	1.22	101.6
PD4-N6018L4204	354.0	1.48	112.5

Outline drawing (in mm)

PD4-N5918...

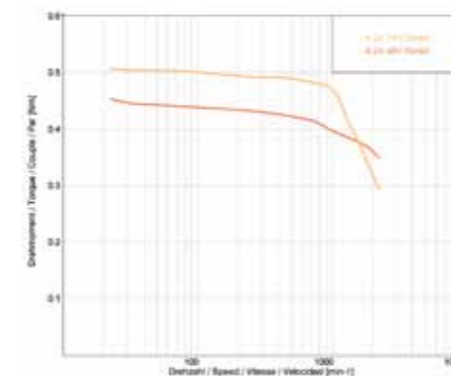


PD4-N6018L4204

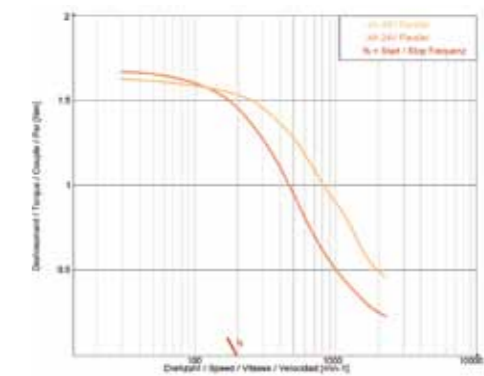


Speed/torque curves

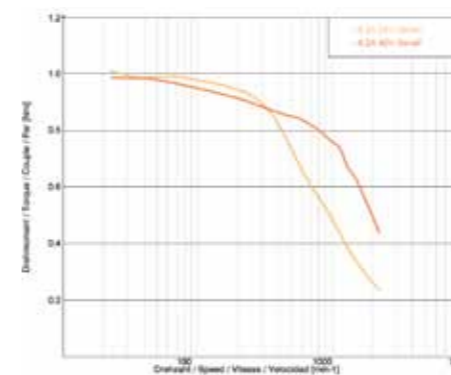
PD4-N5918X4204



PD4-N5918L4204



PD4-N5918M4204



PD4-N6018L4204

