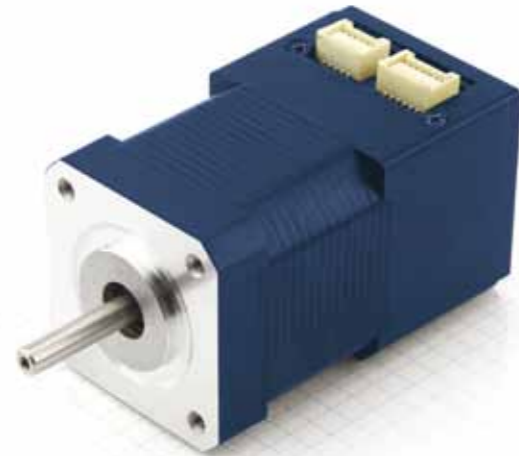


PD2-N4118 series stepper motor with integrated controller



Option



Technical data

Operating voltage: 12 to 48 V DC
Max. phase current: Adjustable per software up to 2.7 A (1% steps), 100%=1.8 A
Interface: RS485 or CANopen
Operating mode: Position, speed, flag position, clock direction, analog, analog position, torque
Operating mode: 1/1, 1/2, 1/4, 1/5, 1/8, 1/10, 1/32, 1/64, adaptive (1/128)
Step frequency: 0 to 50 kHz in the clock/direction mode, 0 to 25 kHz in all other modes
Inputs: 6 digital inputs (5-24 V), 1 analog input (+/-10V)
Outputs: Open-Drain (0 switching, max. 24 V/0.5 A)
Position monitoring: Automatic error correction up to 0.9°
Current reduction: Adjustable in 1% values
Protection circuit: Overvoltage and heatsink temperature > 80 °C
Temperature range: -10 to + 40 °C
Connection type : Connection with JST connectors, M12 variant possible
New functions: Closed loop / sinusoidal commutation / dspDrive / easily programmable as sequential controller with NanoJ

Pin configuration

JST-ZPD-10		JST-ZPD-12	
PIN NO.	FUNCTION	PIN NO.	FUNCTION
1	GND	1	GND
2	GND	2	Input 1
3	RS485 Rx-	3	Input 2
4	RS485 Rx+	4	Input 3
5	RS485 Tx-	5	Input 4
6	RS485 Tx+	6	Input 5
7	GND	7	Input 6
8	Vcc	8	Analog input
9	Vcc	9	Output 1
10	GND	10	Output 2
		11	Output 3
		12	GND

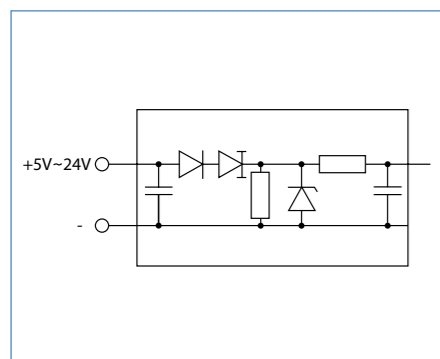
Accessories

- ZK-PD2N**
Connecting cable set
500 mm long with connector
- ZIB-PDx-N** Interface board for rapid commissioning
- ZK-RS485-USB**
RS485-USB cable for PC connection

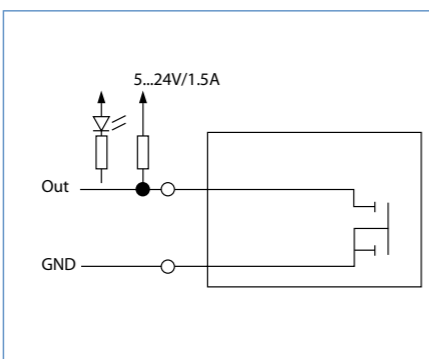
Order identifier

PD2-N4118L1804
 2= RS485
 3= CANopen

Input circuits



Output circuits

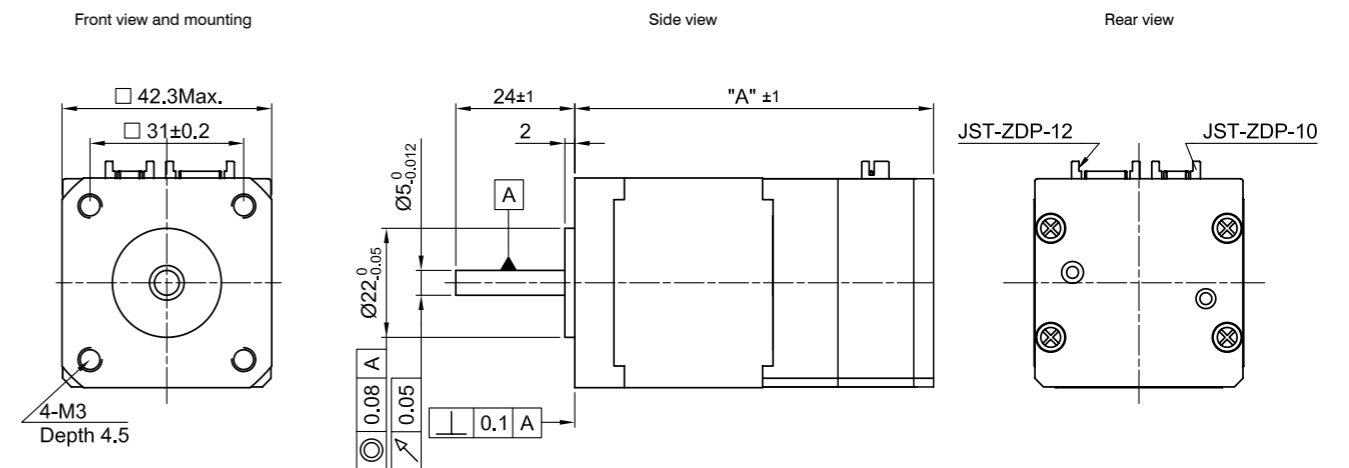


Available versions (others on request)

Type	Holding torque (duration) Ncm	Weight kg	"A" mm
PD2-N4118L1804	50	0,39	72

Outline drawing (in mm)

PD2-N4118...



Speed/torque curves

PD2-N4118L1804

