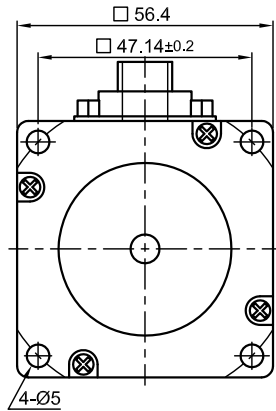
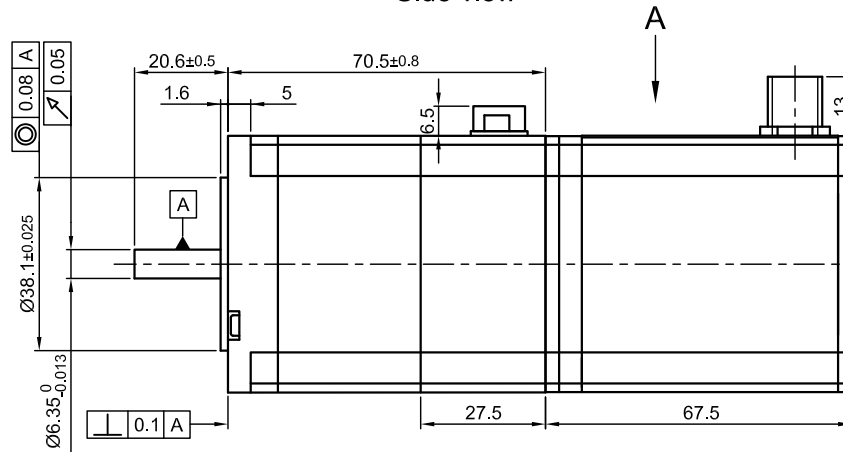


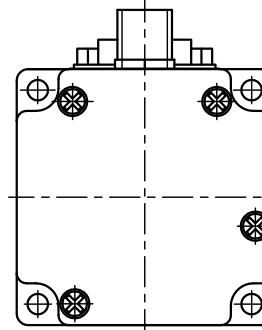
Front view and mounting



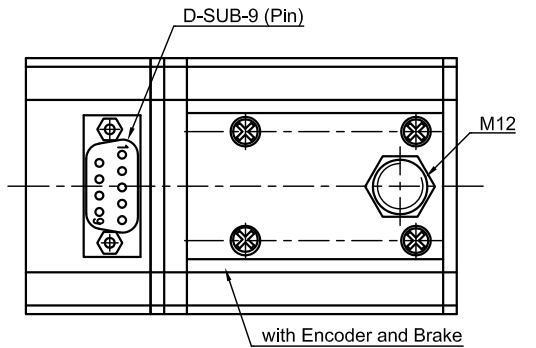
Side view



Rear view

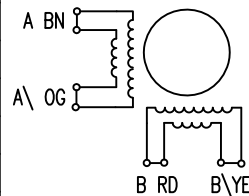


Top view A

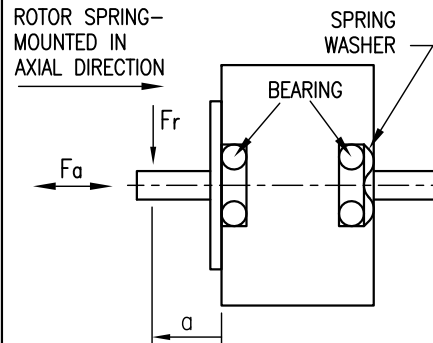


SPECIFICATION	CONNECTION	BIPOLAR PARALLEL
VOLTAGE (VDC)		0.96
AMPS/PHASE		6.4
RESISTANCE/PHASE (Ohms)@25°C		0.15±10%
INDUCTANCE/PHASE (mH) @1KHz		0.5±20%
HOLDING TORQUE (Nm) [lb-in]		1.05 [9.29]
DETENT TORQUE (Nm) [lb-in]		0.04 [0.354]
STEP ANGLE (°) ± ACCURACY		1.8±5% (NON-ACCUM)
BACK-EMF (V) (300 U/min)		3.6
ROTOR INERTIA (Kg-m <sup>2</sup> ) [lb-in <sup>2</sup> ]		3.0x10 <sup>-5</sup> [0.102]
WEIGHT (Kg) [lb]		1.15 [2.54]

WIRING DIAGRAM



PERMISSIBLE RADIAL+AXIAL FORCE



ENCODER M12		CABLE
PIN	ASSIGNMENT	COLOR
1	A	WH
2	A\	BN
3	B	GN
4	B\	YE
5	GND OV	GY
6	I	PK
7	I\	BU
8	Vcc +5V	RD
HOUSING	GND/SHIELDING	

MOTOR D-SUB-9	
PIN	ASSIGNMENT
1	A
2	A\
3	B
4	B\
5	NC
6	NC
7	BRAKE
8	BRAKE/GND
9	NC
HOUSING	GND/SHIELDING

FULL STEP 2 PHASE-Ex.,  
WHEN FACING MOUNTING END (X)

STEP	A	B	A\	B\	CCW	CW
1	+	+	-	-	↓	↑
2	-	+	+	-	↓	↑
3	-	-	+	+	↓	↑
4	+	-	-	+	↓	↑

TEMPERATURE RISE: MAX.80°C (MOTOR STANDSTILL; FOR 2 PHASE ENERGIZED)	AXIAL-FORCE Fa (N)	Fa=15			
AMBIENT TEMPERATURE -10~ 50°C [14°F ~ 122°F]	DISTANCE a (mm)	5	10	15	20
INSULATION RESISTANCE 100 MOhm (UNDER NORMAL TEMPERATURE AND HUMIDITY)	RADIAL-FORCE Fr (N)	130	90	70	52
INSULATION CLASS B 130° [266°F]			AXIAL	RADIAL	
DIELECTRIC STRENGTH 500VAC FOR 1 MIN. (BETWEEN THE MOTOR COILS AND THE MOTOR CASE)	SHAFT PLAY (mm)	0.08	0.02		
AMBIENT HUMIDITY MAX. 85% (NO CONDENSATION)	AT LOAD MAX: (N)	4.5	4.5		

3	PIN N RENAME AS I	24.09.07	J.W.
2	WIRING DIAGRAM	12.06.07	J.W.
4	COLOR OF CABLE	13.07.09	J.W.
REV	DESCRIPTION	DATE	APVD



AD5918M6404-EB

SCALE FREE	APVD	S.Ha.	23.01.07
X ±0.5	CHKD		
1PL ±0.2	DRN	J.W.	22.01.07
2PL ±0.1	SIGNATURE		
ANGLE ±30'	DATE		

STEPPING MOTOR

DWG.NO

AD5918M6404-EB