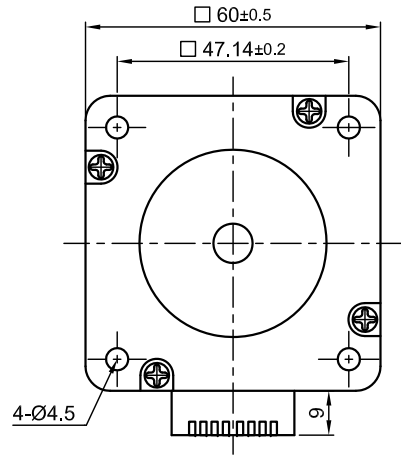
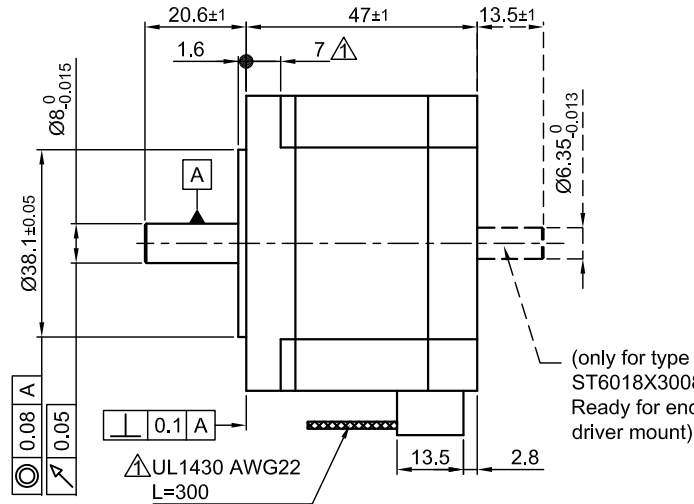


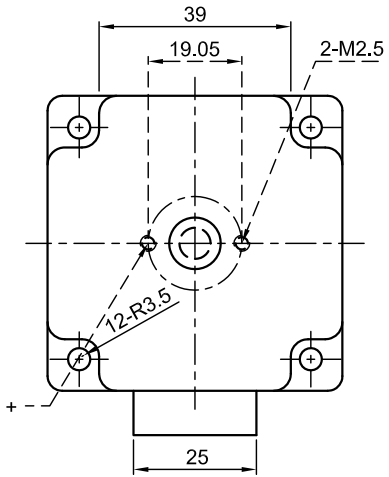
Front view and mounting



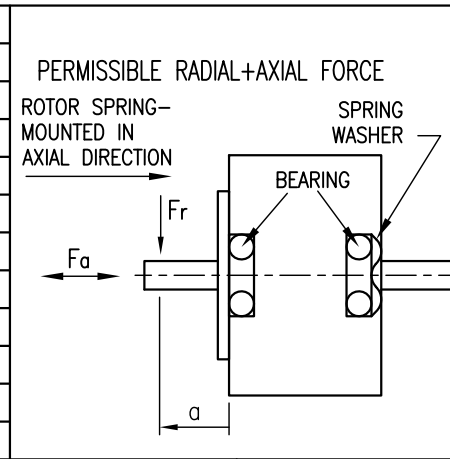
Side view



Rear view



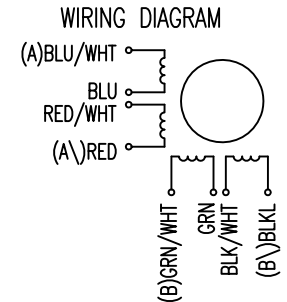
SPECIFICATION	CONNECTION	UNIPOLAR OR BIPOLAR-1 WINDING	BIPOLAR	
			SERIAL	PARALLEL
VOLTAGE (VDC)		2.04		
AMPS/PHASE		3.0	2.12	4.24
RESISTANCE/PHASE (Ohms)@25°C		0.68±15%	1.6±15%	0.4±15%
INDUCTANCE/PHASE (mH) @1KHz		0.8±20%	5.52±20%	1.38±20%
HOLDING TORQUE (Nm) [lb-in]		0.78 [6.9]	1.66 [14.65]	1.66 [14.65]
DETENT TORQUE (Nm) [lb-in]		0.023 [0.199]		
STEP ANGLE (°) ± ACCURACY		1.8±5% (NON-ACCUM)		
BACK-EMF (V) (300 U/min)		11.65		
ROTOR INERTIA (Kg-m <sup>2</sup> ) [lb-in <sup>2</sup> ]		2.75x10 <sup>-5</sup> [0.094]		
WEIGHT (Kg) [lb]		0.6 [1.323]		



UNIPOLAR	TYPE OF CONNECTION (EXTERN)			MOTOR	
	1WINDING	BIPOLAR SERIAL	BIPOLAR PARALLEL	LEADS	WINDING
A	A	A	A	BLU/WHT	A
COM				BLU	
A\		A\	A\	RED/WHT	A\
B	B	B	B	RED	
COM				GRN/WHT	B
B\		B\	B\	GRN	
				BLK/WHT	B\
				BLK	

FULL STEP 2 PHASE-Ex., WHEN FACING MOUNTING END (X)

STEP	A	B	A\	B\	CCW	CW
1	+	+	-	-	↓	↑
2	-	+	+	-	↓	↑
3	-	-	+	+	↓	↑
4	+	-	-	+	↓	↑



TEMPERATURE RISE: MAX.80°C (MOTOR STANDSTILL; FOR 2 PHASE ENERGIZED)		AXIAL-FORCE Fa (N)		Fa=14	
AMBIENT TEMPERATURE -10~ 50°C [14°F ~ 122°F]		DISTANCE a (mm)		5	10
INSULATION RESISTANCE 100 MOhm (UNDER NORMAL TEMPERATURE AND HUMIDITY)		RADIAL-FORCE Fr (N)		163	112
INSULATION CLASS B 130° [266°F]				85	63
DIELECTRIC STRENGTH 500VAC FOR 1 MIN. (BETWEEN THE MOTOR COILS AND THE MOTOR CASE)		SHAFT PLAY (mm)		0.075	0.025
AMBIENT HUMIDITY MAX. 85% (NO CONDENSATION)		AT LOAD MAX: (N)		10	5.0

				SCALE FREE	APVD	S.Ha.	16.01.07	<b>STEPPING MOTOR</b>
				X ±0.5	CHKD			
1	LENGTH+UL NO.	06.08.09	J.W.	1PL ±0.2	DRN	J.W.	13.07.06	DWG.NO
REV	DESCRIPTION	DATE	APVD	2PL ±0.1	SIGNATURE		DATE	ST6018X3008
				ANGLE ±30'				