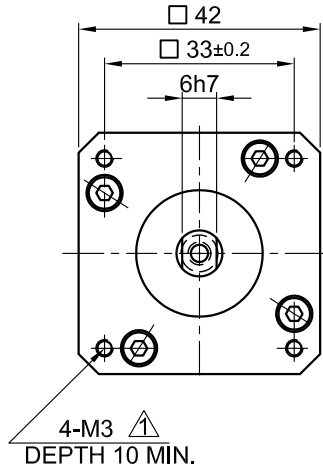
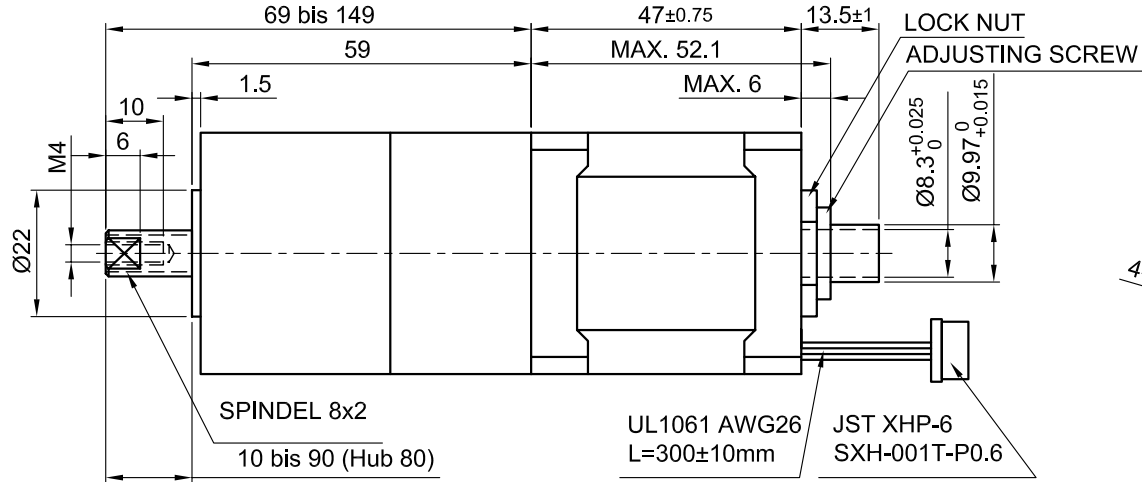


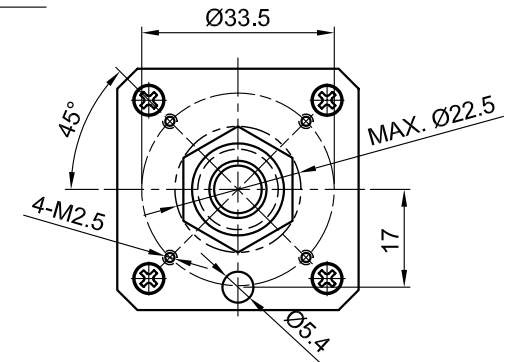
Front view and mounting



Side view



Rear view



SPECIFICATION	UNIPOLAR OR BIPOLAR-1 WINDING	BIPOLAR SERIAL
AMPS/PHASE	1.8	1.27
RESISTANCE/PHASE (Ohms)@25°C	1.9±15%	3.8±15%
INDUCTANCE/PHASE (mH) @1KHz	1.65±20%	6.6±20%
MAX. THUST (N) [lbf]	800 [180]	
MAX. FEED (mm/sec.)	100	
RESOLUTION (mm/STEP)	0.01	
POSITIONING ACCURACY (mm)	0.01	
SPINDLE PITCH (mm)	2	
STROKE (mm)	80	
WEIGHT (Kg) [lb]	0.67 [1.468]	
TEMPERATURE RISE: MAX.80°C (MOTOR STANDSTILL; FOR 2 PHASE ENERGIZED)		
AMBIENT TEMPERATURE -10°~ 50°C [14°F ~ 122°F]		
INSULATION RESISTANCE 100 MOhm (UNDER NORMAL TEMPERATURE AND HUMIDITY)		
INSULATION CLASS B 130° [266°F]		
DIELECTRIC STRENGTH 500VAC FOR 1 MIN. (BETWEEN THE MOTOR COILS AND THE MOTOR CASE)		
AMBIENT HUMIDITY MAX. 85% (NO CONDENSATION)		

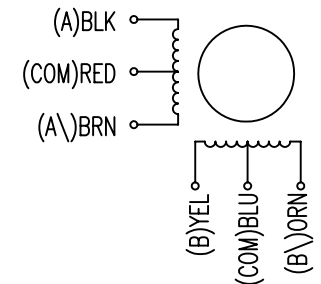
TYPE OF CONNECTION (EXTERN)			MOTOR		
UNIPOLAR	BIPOLAR		CONNECTOR PIN NO.	LEADS	WINDING
	1WINDING	SERIAL			
A —	A —	A —	1	BLK	A
COM —	COM —		5	RED	COM
A\ —		A\ —	3	BRN	A\
B —	B —	B —	2	YEL	B
COM —	COM —		6	BLU	COM
B\ —		B\ —	4	ORN	B\

for >speed ← — — — — —
for <speed ← — — — — —

FULL STEP 2 PHASE-Ex.,
WHEN FACING MOUNTING END (X)

STEP	A	B	A\	B\	
1	+	+	-	-	CCW
2	-	+	+	-	
3	-	-	+	+	CW
4	+	-	-	+	

WIRING DIAGRAM



REV	DESCRIPTION	DATE	APVD
1	OLD SCREW THREAD M2.5	13.11.07	J.W.

SCALE	FREE	APVD	S.H.a.	18.06.07
X	±0.5	CHKD		
1PL	±0.2	DRN	J.W.	14.06.07
2PL	±0.1	SIGNATURE		DATE
ANGLE	±30'			

STEPPING MOTOR

DWG.NO

LK4218L1806

NANOTEC:

LK4218L1806