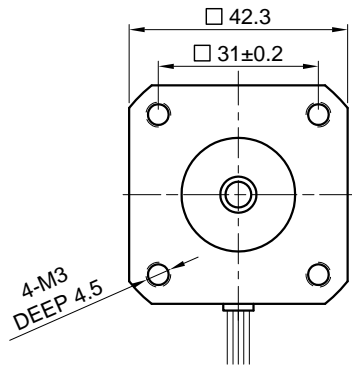
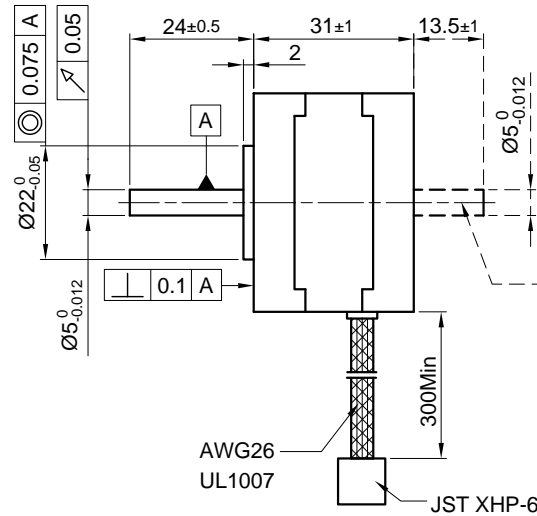


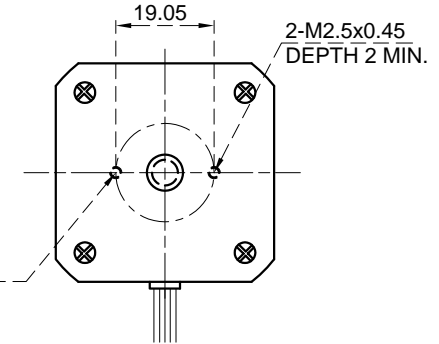
Front view and mounting



Side view



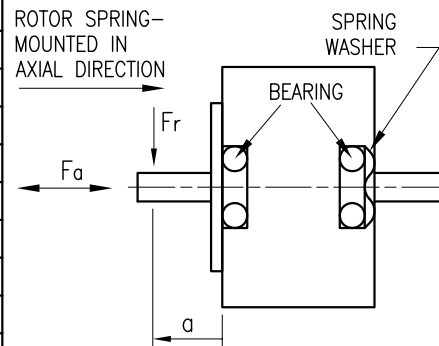
Rear view



(only for type ST4118S0206-B Ready for encoder + driver mount)

SPECIFICATION	CONNECTION	UNIPOLAR OR BIPOLAR-1 WINDING	BIPOLAR SERIAL
VOLTAGE (VDC)		16.5	24.0
AMPS/PHASE		0.22	0.16
RESISTANCE/PHASE (Ohms)@25°C		75±15%	150±15%
INDUCTANCE/PHASE (mH) @1KHz		53±20%	212±20%
HOLDING TORQUE (Nm) [lb-in]		0.15 [1.328]	0.212 [1.876]
DETENT TORQUE (Nm) [lb-in]		5.9x10 ⁻³ [5.222x10 ⁻²]	
STEP ANGLE (°)		1.8	
STEP ACCURACY (NON-ACCUM)		±5%	
ROTOR INERTIA (Kg-m ²) [lb-in ²]		3.8x10 ⁻⁶ [1.3x10 ⁻²]	
WEIGHT (Kg) [lb]		0.2 [0.44]	
TEMPERATURE RISE: MAX.80°C (MOTOR STANDSTILL; FOR 2 PHASE ENERGIZED)			
AMBIENT TEMPERATURE -10~ 50°C [14°F ~ 122°F]			
INSULATION RESISTANCE 100 MOhm (UNDER NORMAL TEMPERATURE AND HUMIDITY)			
INSULATION CLASS B 130° [266°F]			
DIELECTRIC STRENGTH 500VAC FOR 1 MIN. (BETWEEN THE MOTOR COILS AND THE MOTOR CASE)			
AMBIENT HUMIDITY MAX. 85% (NO CONDENSATION)			

PERMISSIBLE RADIAL+AXIAL FORCE



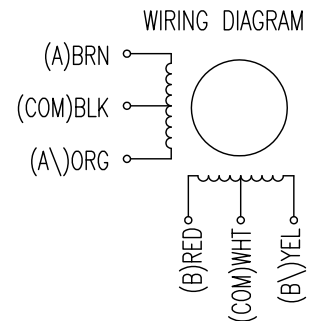
AXIAL-FORCE Fa (N)	Fa=7			
DISTANCE a (mm)	5	10	15	20
RADIAL-FORCE Fr (N)	58	36	26	20
	AXIAL	RADIAL		
SHAFT PLAY (mm)	0.08 0.02			
AT LOAD MAX: (N)	4.5		4.5	

UNIPOLAR	TYPE OF CONNECTION (EXTERN)		MOTOR		
	1WINDING	SERIAL	CONNECTOR PIN NO.	LEADS	WINDING
A	A	A	1	BRN	A
COM	COM		5	BLK	COM
A\		A\	3	ORG	A\
B	B	B	2	RED	B
COM	COM		6	WHT	COM
B\		B\	4	YEL	B\

for >speed ←
for <speed ←

FULL STEP 2 PHASE-Ex., WHEN FACING MOUNTING END (X)

STEP	A	B	A\	B\	CCW	CW
1	+	+	-	-	↓	↑
2	-	+	+	-	↓	↑
3	-	-	+	+	↓	↑
4	+	-	-	+	↓	↑



NANOTEC:				SCALE FREE	APVD	S.Hα.	26.02.07	STEPPING MOTOR
				X ±0.5	CHKD			
				1PL ±0.2	DRN	J.W.	29.11.06	DWG.NO
				2PL ±0.1	SIGNATURE		DATE	ST4118S0206
REV	DESCRIPTION	DATE	APVD	ST4118S0206				